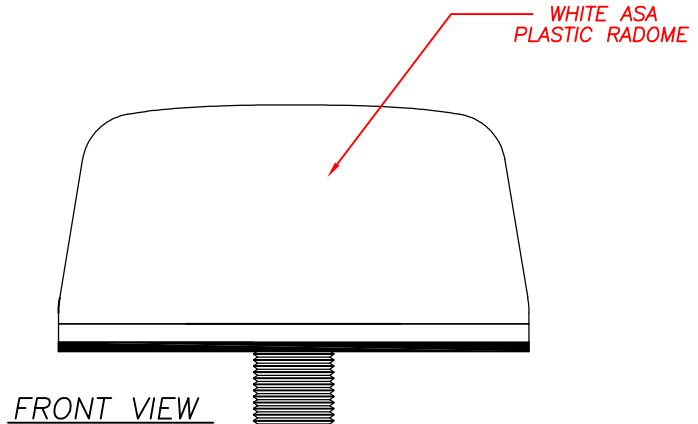
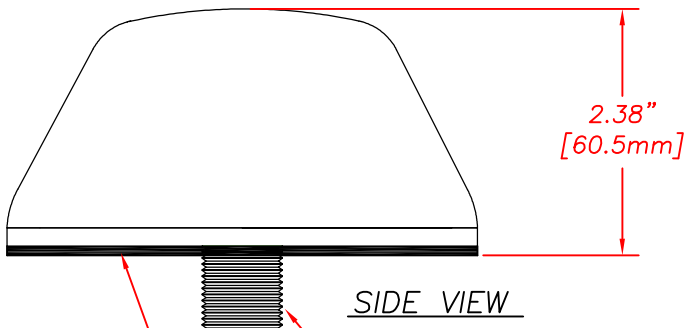


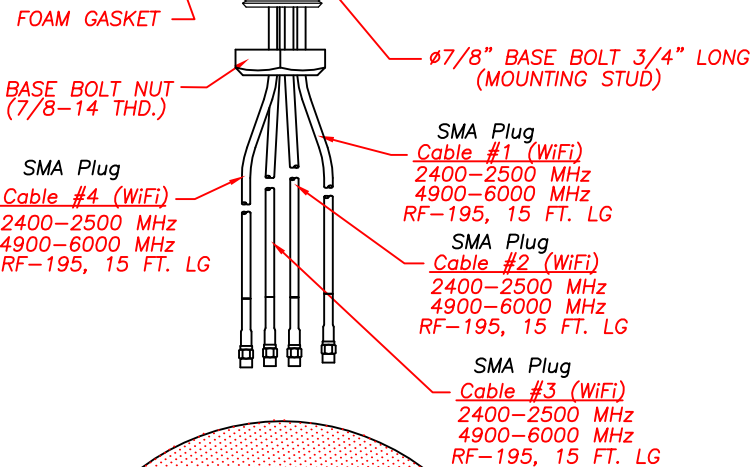
LTM404-3C3C3C3C-WHT-180

Dual Band WiFi MIMO Antenna 4 X 2.4-2.5GHz, 4.9-6 GHz (802.11n)



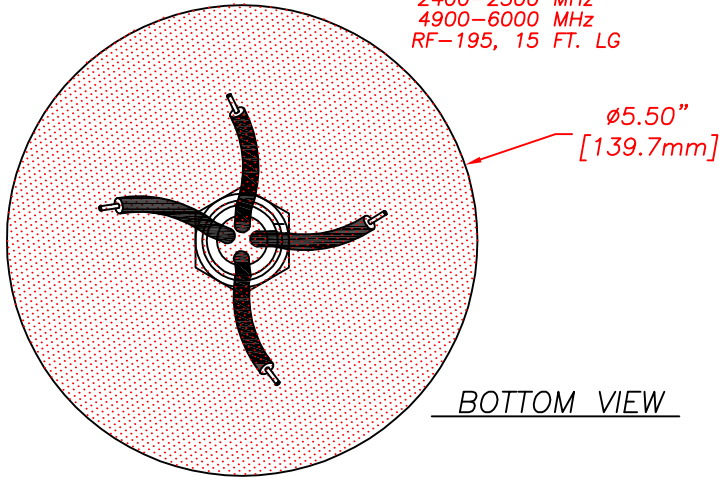
SIDE VIEW

FRONT VIEW



Frequency and Cable Table

CABLE NO. 1 (RF-195 CABLE)
2400-2500 MHz (WiFi)
4900-6000 MHz (WiFi)
CABLE NO. 2 (RF-195 CABLE)
2400-2500 MHz (WiFi)
4900-6000 MHz (WiFi)
CABLE NO. 3 (RF-195 CABLE)
2400-2500 MHz (WiFi)
4900-6000 MHz (WiFi)
CABLE NO. 4 (RF-195 CABLE)
2400-2500 MHz (WiFi)
4900-6000 MHz (WiFi)



BOTTOM VIEW

Antenna Specifications

**Freq/Gain:	2.4-2.5 GHz/4.9-6 GHz 5dBi Peak
VSWR:	< 2:1 VSWR over range
Maximum Power:	10 Watts
Connectors/Interface:	SMA Plugs
Case:	5.50" Dia. x 2.38" High
Radome Material:	ASA UV Inhibitive Plastic
Cable	<ul style="list-style-type: none"> — cable 1 — RF-195, 15 ft. (2.4-2.5 GHz/4.9-6 GHz) — cable 2 — RF-195, 15 ft. (2.4-2.5 GHz/4.9-6 GHz) — cable 3 — RF-195, 15 ft. (2.4-2.5 GHz/4.9-6 GHz) — cable 4 — RF-195, 15 ft. (2.4-2.5 GHz/4.9-6 GHz)
Impedance:	50 OHM Nominal
Water Ingress:	IPX7 (when properly mounted)
Shock & Vibration:	IEEE1478, EN61373, MIL-810G, TIA 329.2-C
Mounting:	7/8" Dia. Feed through. 3/4" lg. thread for up to 1/2" thick surface
Operating Temperature:	-40° to +80° C

** Gain measured with 1 ft. cables on 12" Ground Plane

R.P. 9-16-15

MobileMark

US OFFICE & HEADQUARTERS: 1140 W. THORNDALE AVE. ITASCA, IL 60143
TEL: (847) 671-6690 * FAX (847) 250-5120

UK OFFICE: 8 MIRAS BUS PARK, KEYS PARK ROAD, HEDNESFORD WS12 2FS, UK
UK TEL: (+44) 1543-459555 FAX (+44) 1543-459545
VISIT OUR WEBSITE AT WWW.MOBILEMARK.COM

