

You understand energy...
We understand wireless

At Mobile Mark, we know that each wireless network has its own challenges. That's why we design antennas solutions that optimize connections. From wireless network build-out to remote monitoring to fleet management, **we have a solution for you.**

We offer exactly what you need, when you need it. And we have **the flexibility to customize products** to your unique requirements.

Mobile Mark engineers are experienced and knowledgeable; we can partner with you to make sure your wireless connections are optimized. With our extensive line of antennas, we make it easy to **find the antenna that fits your application.**

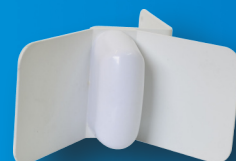
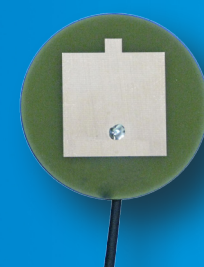


You understand energy...
We understand wireless

www.MobileMark.com for our full product line.

Exploration & Mining

Exploration activities take place in difficult conditions, such as corrosive environment or heavy vibration. Mobile Mark has a track record of developing environment-resilient antennas such as foam-filled antennas that protect against severe vibration, impact, and water ingress or sea salt incursion. These antennas provide dependable wireless connections for telemetry and mineral exploration.



Smart Grids

Smart grids need consistent, dependable data transfer along the full length of the grid with more extensive communication requirements likely at key nodes in the system. Mobile Mark offers a range of rugged omni-directional and directional site antennas designed to cover targeted areas, whether close-in or far-field. The antennas can meet industry specific features such as high voltage insulation or PTCRB requirements by Cellular Carriers.

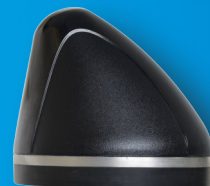
RFID and Asset Tracking

RFID networks can help you determine whether critical assets are leaving or entering an area. Setting up a reliable RFID network is not always straight forward; each network is unique. Antenna selection for these networks is a key component, and we have a wide array of RFID Reader Antennas in different sizes and gains. We also offer antennas for WiFi based network, including high capacity MIMO (multiple-input-multiple-output) antennas.



Mobile Fleet

Mobile Mark offers the wireless industry's most extensive line of antennas for fleet management solutions whether you need a simple GPS-only antenna for navigation or a Multiband antenna that combines multiple applications (such as Vehicle Telematics, WiFi Hotspots, Trunking or Orbcomm) in the same package.



Smart Meters

Different meters will require different wireless solutions. Some meters will require external, heavy duty, tamper resistant antennas and others will need internally embedded antennas that must be custom designed. In RF dense areas, the challenge may be to isolate the desired signal from extraneous signals, and in remote areas, you may need higher gain to carry the signal further. You may also need the flexibility to work on different wireless networks, such as switching from WiFi to Cellular.



Our antennas cover many commercially available wireless networks (Cellular, LTE, ISM, WiFi, GPS, RFID, and VHF/UHF) as well as specialized networks such as 1400 MHz. Your installers will like the fact our antennas are **easy to install and service free**.

We have been designing and manufacturing antennas since 1984, and have established a track record for **high performance and quality service**. With production facilities in both the US and UK, we are conveniently situated to provide quick response for both engineering advice and sales support.

www.MobileMark.com for our full product line.



EXPLORATION & MINING	SMART GRID	RFID & ASSET MANAGEMENT	MOBILE FLEET	SMART METER
 <p>EM Series Embedded Custom enclosures or board-only WiFi, 2.4 & 5 GHz 2-5 dBi gain</p>	 <p>OD Series Omni-Directional Rugged, foam filled optional 700 MHz, 1400 MHz Cellular, WiFi 3-12 dBi gain</p>	 <p>ECO Series Omni-Directional Recessed N plug, N Female Pigtail, WiFi, WiMAX, DSRC, Public safety 4.9 5-12 dBi gain</p>	 <p>LTM Series, 5-cable Multi-band fleet Management LTE MIMO, WiFi MIMO, GPS 4-5 dBi gain</p>	 <p>DM & SM Series, Low Profile With or Without GPS GPS with WiFi or Cellular 0-3dBi gain</p>
 <p>MOD Series Omni-Directional Impact resistant/Water-Proof WiFi, 2.4 & 5 GHz 3-12 dBi gain</p>	 <p>PS Series Directional Sectors Low Profile, 12.5-inches tall WiFi, WiMAX, DSRC Public Safety 4.9 10-14 dBi gain</p>	 <p>PN Series RFID Panels Developer's Kit Option RFID, 868 or 915 MHz 6-10 dBi gain</p>	 <p>MGW Mags & SMW Surface 3-cable & 4-cables, 30+ combos GPS, Cellular, WiFi, UMTS, AWS, WiMAX 3-5 dBi gain</p>	 <p>EM Series Embedded Custom enclosures or Board-only Cellular, 824-2200 MHz 0-2 dBi gain</p>
 <p>RM Series Surface Mount Rugged Construction, Broadband 694-2700 MHz or 1.7-6.0 GHz 3-5 dBi gain</p>	 <p>SCR Series Corner Reflector Broad Beamwidth, easy to align WiFi, WiMAX, DSRC Public Safety 4.9 9-13 dBi gain</p>	 <p>YAG Series Directional Antennas Outdoors or In-Building WiFi, 2.4 & 5 GHz 8-12 dBi gain</p>	 <p>SMD WiFi MIMO Surface-mount Multiple-Input-Multiple-Output WiFi, 2.4 & 5 GHz 4 dBi gain</p>	 <p>PSN & PSKN Device Antennas Straight or Knuckle- swivel LTE, Cellular, WiFi, WiMAX 3 dBi</p>