



Innovative antenna designs

Responsive manufacturing

Trusted partner

**Keeping Your World Connected**



## Company Capabilities

Mobile Mark is a leading supplier of innovative, high performance antennas to wireless companies across the globe.

We've been in the wireless industry for over 30 years and have our roots in the early Cellular trials. We have grown and evolved over the years, along with the industry.

Today, we benefit from enhanced design capabilities and expanded production capacity — along with a greater understanding of new and emerging markets — all of which have allowed us to become one of the best antenna developers in our field.

Our customers have been our partners along the way. We believe in taking the time to understand our customers' individual needs. Through close consultation with clients, we are able to deliver innovative, tailored solutions that meet specific antenna requirements.

Mobile Mark has the engineering capabilities to take a project from initial concept through to final production. We have recently moved into larger production facilities in both the US and the UK. We have the enhanced plant capacity and the staffing flexibility to meet OEM production volumes as required.

Rapid prototyping capabilities allow us to take our designs from concept to reality in an extremely short time span, and to verify the performance of the antenna. A variety of network analyzers and an anechoic chamber enable us to conduct measurements up to 13 GHz, and ensure that the antennas designed meet or exceed customer requirements.

We have onsite injection molding equipment and a fully equipped modeling shop staffed with skilled model makers to assist in the design phase and help us come up with a superior product — an antenna that not only meets the customer's electrical specifications, but is also very attractively packaged.

Our responsive manufacturing capabilities and production controls ensure that the antennas are delivered on time and to specs. Mobile Mark customers include both small, specialized manufacturers as well as major players in the wireless industry.

We are proud to offer exceptional antennas as well as outstanding customer service. For antennas, and an antenna partner, that won't let you down, turn to Mobile Mark.

# Keeping Your World Connected...

## Public Safety

Public Safety and Emergency Response teams demand dependable wireless connections. The antenna provides the critical link and Mobile Mark designs antenna solutions that optimize those connections. From wireless network build-out to video streaming to fleet management, we have a solution for you. Don't be caught short in a life-threatening situation; choose antennas you can rely on to keep you connected.



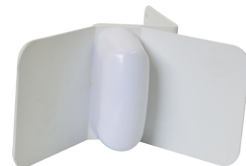
- Vehicle tracking & location
- Cellular M2M machine-to-machine
- WiFi Hotspots & wireless Video
- Land Mobile Radio



## Military

We understand that military antennas will be used in difficult environments and need to be ready for squad deployments, pop-up stations, or communications intelligence gathering (COMINT). That's why Mobile Mark antennas are designed to be rugged, durable and reliable. They are built with quality material and meet Industry and Military specifications for Shock, Vibration, Temperature, and Water Ingress.

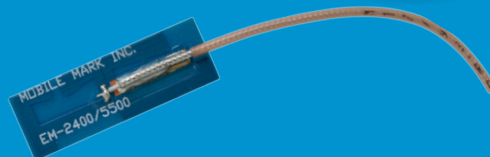
- Embedded/Body-worn
- Asset Tracking
- Network Deployment
- Vehicle Location



## Utilities & Mining

From exploration and extraction through distribution and servicing, we know how important it is to keep power flowing throughout the energy sector. Wireless technology is playing an increasingly important role in managing these networks and Mobile Mark antennas offer the rugged construction and efficient performance needed to ensure dependable connections. We can customize products for unique requirements.

- Exploration & Mining
- Smart Grids & Meters
- RFID & Asset Tracking
- Mobile Fleets



# MobileMark

antenna solutions

## Trains & Transit

Buses, trams and trains are all incorporating wireless technology, both to improve their service track-record and to improve their customers' experience. They often combine multiple wireless technologies to do this, from GPS for navigation, to GPS & Cellular for bus monitoring, to WiFi MIMO for passenger internet access. We even offer ground-plane independent models for equipment with fiberglass roofs.

- Tracking & scheduling
- Wireless fare collection
- In-bus wireless hotspots
- Positive Train Control



## Remote Monitoring & Surveillance

Machine-to-Machine wireless connections are predicted to exceed human-to-human wireless connections. But connecting places and things is a bit different than connecting people. Many times the locations being connected face certain challenges, such as harsh conditions or exposure to damage or vandalism. Our antenna solutions are designed to handle tough conditions while providing the reliable wireless connection you would expect from a Mobile Mark antenna.



- Private Security
- Cellular M2M
- WiFi data networks
- ISM bands



## Fleet Management

Mobile Mark has consistently lead the industry with the most extensive and innovative range of antenna solutions that combine multiple wireless technologies: from simple GPS & Cellular antennas to complex 5-cable antennas combining LTE MIMO, DSRC, WiFi and GPS in the same antenna housing. Our antennas are rugged enough to handle tough environments and efficient enough to maintain reliable connections.

- Local delivery vans
- Long haul trucks
- Corporate fleets
- Taxis & Limos



## DAS & Small Cell

Wireless users want dependable coverage in hard-to-reach areas. Network infrastructure is often pushed to the limit, but a well-designed antenna can extend that limit and provide the much desired high-speed connectivity. With a complete range of antennas, including directional and omni-directional site antennas, in-building ceiling mounts, and fixed location fill-in antennas, Mobile Mark offers solutions for either targeted coverage or wide-area coverage.

- In-Building Cellular networks
- WiFi Hotspots & high-speed service
- Stadium & Campus coverage
- Small Cell & Outdoor coverage



## Asset Tracking & RFID

RFID technology allows us to identify, monitor and track items ranging from medicine to fruit to parcels to people. But each application has its own quirks and challenges and may require a different antenna solution. Taking RFID from theory to practice means finding the right partners, partners who have the knowledge and expertise to design the right products to get the job done.



- Smart Shelving
- Nearfield & Dual Polarity
- CP Patch Antennas
- Heavy Duty & High Vibration



## Connected Car & Smart Highway

Everyone is talking about the Connected Car! The lynchpin of a successful Smart Highway system will be dependable wireless connections. Wireless networks must reach seamlessly into hard-to-cover corners of city intersections and along vast expanses of interstate highways. Mobile Mark offers both Vehicle-to-Vehicle (V2V) and Vehicle-to-Infrastructure (V2I) communication antennas to help DSRC system designers construct a network that offers continuous and balanced coverage.



- Highway traffic management
- Wayside road infrastructure
- Intersection traffic management
- Connected Car communications

## US location:

Mobile Mark, Inc.  
1140 W. Thorndale Ave.  
Itasca, IL 60143, USA

- Global Headquarters
- Engineering design center
- Environmental testing facilities
- Expanded manufacturing space

Toll free: 1-800-648-2800 (US & Canada)  
Phone: 1-847-671-6690  
Fax: 1-847-250-5120  
Email: [info@mobilemark.com](mailto:info@mobilemark.com)



## UK location:

Mobile Mark Europe, Ltd.  
8 Miras Business Park  
Hednesford, Staffordshire, WS12 2FS, UK

- European production facility
- Expanded manufacturing space
- ISO-9001 certified

Phone: +44 1543 459555  
Fax: +44 1543 459545  
Email: [enquiries@mobilemarkeurope.co.uk](mailto:enquiries@mobilemarkeurope.co.uk)



## Distributors:

For a complete listing, visit:

**[www.MobileMark.com](http://www.MobileMark.com)**

